

SOPHISTICATED AND STYLISH  
PENTHOUSE LIVING

9 STEEDMAN STREET  
ELEPHANT & CASTLE

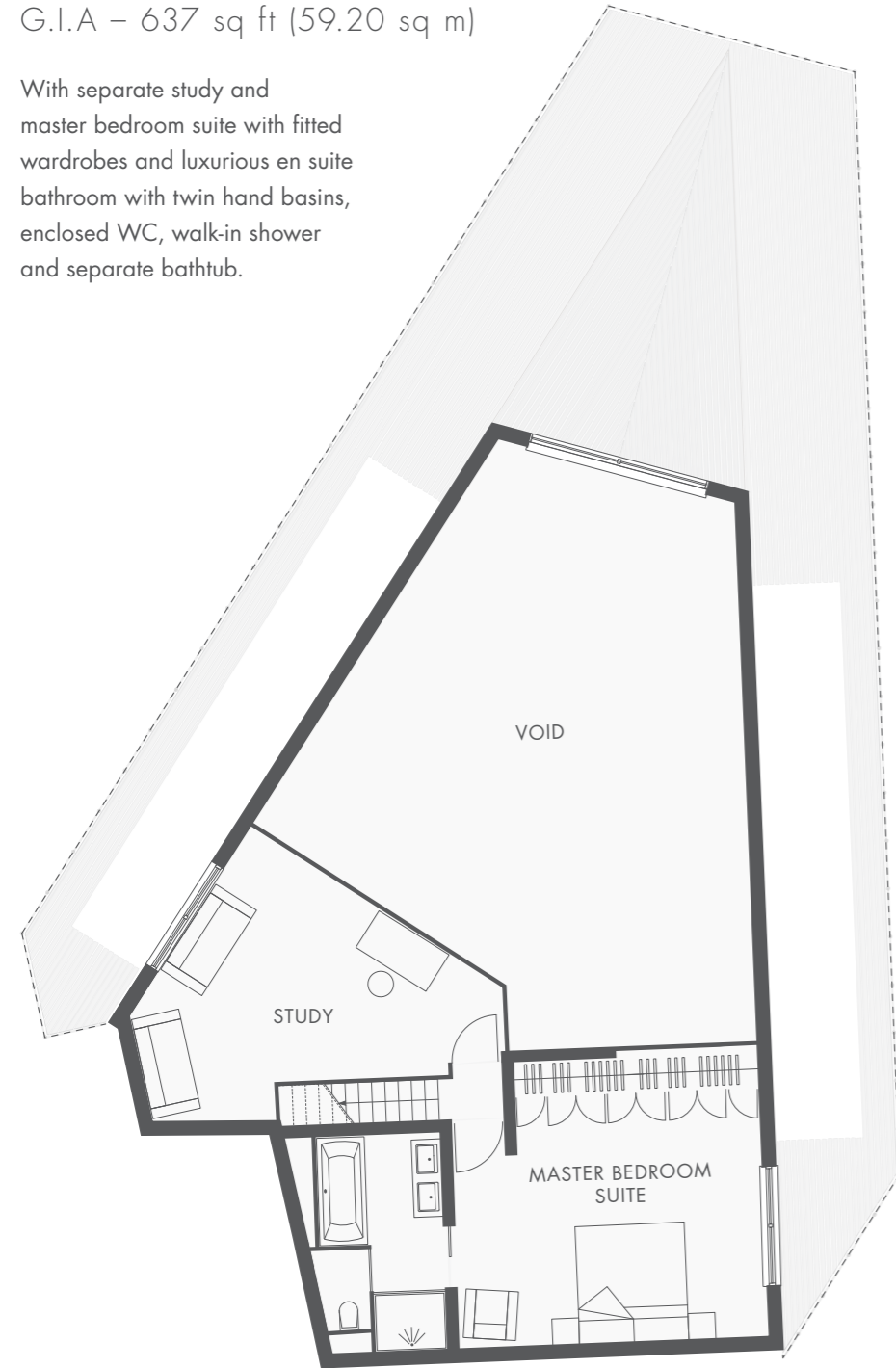
A DEVELOPMENT BY



FISHER KING

UPPER FLOOR  
G.I.A – 637 sq ft (59.20 sq m)

With separate study and master bedroom suite with fitted wardrobes and luxurious en suite bathroom with twin hand basins, enclosed WC, walk-in shower and separate bathtub.



SPECIFICATION

- Designed by CZWG architects
- Wide engineered oiled Oak flooring
- Oak veneer doors, with Piers Gough specified architraves and skirtings
- Sliding glazed doors opening onto private roof terrace
- Large dining space seating 10-12
- Bespoke fully fitted kitchen, white lacquered units with Corian worktops and glass splashbacks
- Separate laundry room with washing machine and dryer
- Bedroom suites with bespoke fitted wardrobes and en suite bathrooms with:
  - White sanitaryware with chrome fittings
  - Sculptural bathtubs
  - Walk-in showers
  - Enclosed WC's
  - Heated towel rails
  - Porcelain floor and wall tiles
- Solid timber staircase treads and glass and stainless steel balustrades / handrails
- Telephone, TV and power points to all principal rooms
- CAT 5 cabling
- Air conditioning
- Private gated development
- Ground floor foyer concierge desk
- 24 hour concierge
- CCTV security
- Two high-speed lifts
- Secure underground parking space available

Malcolm Rowley  
ARCHITECTS LTD

LOWER FLOOR  
G.I.A – 1,530 sq ft (142.17 sq m)

Designed to provide an abundance of lateral entertaining and living space, the lower floor of the penthouse has a spacious main reception room with panoramic windows, opening onto a private rooftop terrace. There is also an impressive dining space for 10-12 people, a spacious fully fitted designer kitchen with breakfast bar/area. Bedroom suite 2 with fitted wardrobes and en suite bathroom with twin hand basins, enclosed WC, walk-in shower and separate bathtub.



SOPHISTICATED AND STYLISH  
PENTHOUSE LIVING

# 9 STEEDMAN STREET

ELEPHANT & CASTLE

Magnificent duplex penthouse on the top tenth and mezzanine floors of iconic Piers Gough apartment building, providing 2,161 sq ft (200.80 sq m) of living space over two floors complete with large private terrace that wrap around the entire penthouse providing panoramic views over the surrounding cityscape.

## THE BUILDING

Completed in 2005, the iconic South Central building was designed by multi-award winning architect Piers Gough of architectural practice CZWG. The stunning tiered elevation, rising to 10 storeys, has a sleek glass and aquamarine façade with angled balconies.

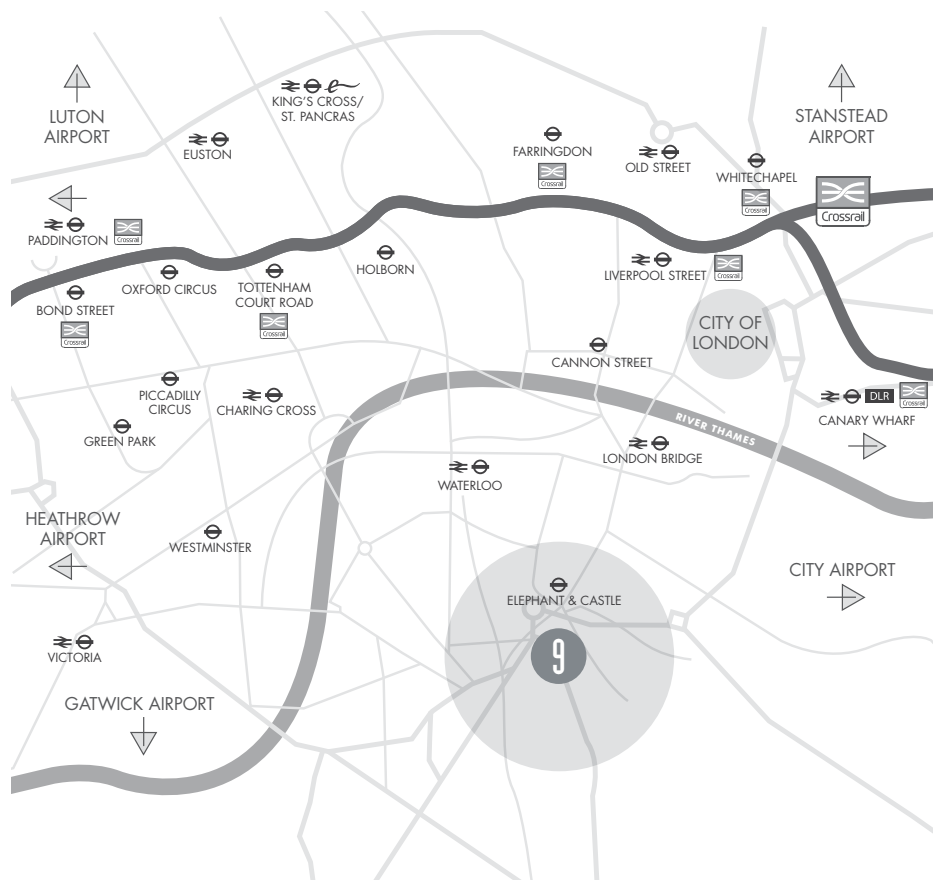


INDICATIVE CGI OF INTERIOR



DOUBLE  
HEIGHT CEILING  
14'76" 4.5m





## AN OUTSTANDING CENTRAL LOCATION

Located on Steedman Street in the heart of London's vibrant and cosmopolitan Elephant and Castle district, the penthouse is ideally located in London's Travel Zone One. It is just a few minutes walk from Elephant and Castle underground (Northern & Bakerloo Lines) and mainline railway stations. Adjacent Walworth Road has a range of high-street grocery superstores and local convenience shops.

LOCAL AUTHORITY  
London Borough of Southwark

FOR MORE INFORMATION PLEASE CONTACT:



**F I S H E R K I N G**

THE FACTORY, TENNIS COURT,  
9 WINCHESTER SQUARE,  
LONDON SE1 9BP

T: +44 (0) 20 3179 9990  
E: [info@fisherkinglondon.com](mailto:info@fisherkinglondon.com)  
W: [www.fisherkinglondon.com](http://www.fisherkinglondon.com)

### IMPORTANT NOTICE:

These particulars are prepared for guidance purposes only. They are intended to give a fair overall description of the property but are not intended to constitute any part of an offer or contract. Nothing in these particulars shall be or deemed to be a statement that the property is in good structural condition or otherwise nor that any services, appliance, equipment or facilities are in good working order. Whilst all the information contained in these particulars whether in text, plans, photography or CGI's are given in good faith, intending purchasers must make their own enquiries as to the accuracy of all matters upon which they intend to rely. October 2013. Designed & produced by Lawrie Cornish +44 (0)20 7935 4084.